



## ***Carhaulers & Equipment***



- 5" CHANNEL BUGGY HAULER (B5)
- 6" CHANNEL SUPER-WIDE (B6)
- 8" CHANNEL SUPER-WIDE (B8)
- ANGLE PIPETOP (P7)
- ANGLE PIPETOP (P8)
- 4" CHANNEL CARHAULER (C4)
- 5" CHANNEL CARHAULER (C5)
- 6" CHANNEL CUSTOM CARHAULER (CC)
- 8" CHANNEL CARHAULER (C8)
- LIGHT DUTY DECKOVER 5" CHANNEL (L5)
- MEDIUM DUTY DECKOVER 6" CHANNEL (L6)



# 5" Channel Buggy Hauler (B5)

# B5



DRIVE-OVER  
FENDERS



**LED LIGHTS** Lengths  
18' & 20'

102" x 20' (B5) Pictured

## Standard Features

- 7,000 lb. G.V.W.R.
- 3,500 lb. x 2 G.A.W.R.
- 2" Ball Coupler
- Safety Chains
- 1 - Side Wind Drop-Leg Jack (8,000 lb.)
- 2-Dexter E-Z lube Axles, Idler & Brake (3,500 lb.)
- 4 Leaf Double-eye Spring Suspension
- 4 - NEW 15" White Spoke Wheels
- 4 - NEW ST205/75R15 Radial Tires (1,820 lb.)
- Electric Breakaway Kit w/ Charger
- Rubrail & Stake Pockets
- 9" High Drive Over DP Steel Fenders
- 5' Channel Ramps w/ Holder
- 5" Channel Frame & Tongue
- 3" Channel Crossmembers 24" on Center

- 2" Treated Pine Lumber Deck
- 102" Wide Deck
- DOT Approved Flushmount LED Lights
- Sealed Wire Harness
- Sand Blasted, Acid Washed, Powder Coated

**POWDER COATED**

At PJ Trailers, every trailer we build is powder coated with Sherwin-Williams™ Powder Coat. A powder coat finish is far superior to conventional paint. It is extremely durable and does not easily crack, chip, or peel as conventional paint does. Powdercoating also helps prevent rust & corrosion making it the longest lasting and most durable finish on the market.

## Coupler Options

- BP 2" A-Frame \*
- BP 2 5/16" A-Frame
- BP 2" Adjustable
- BP 2 5/16" Adjustable
- 3" Pintle Eye - Channel-mount (14,000 lb.)

## Axle Options

- (2) 3,500# One Electric / Spring \*
- (2) 3,500# Electric / Spring
- (2) 5,200# One Electric / Spring
- (2) 5,200# Electric / Spring

## Tail Options

- Straight Deck w/ 5' Slide-in Ramps \*
- 2' Dovetail w/ 5' Slide-in Ramps
- 2' Dovetail w/ 2 Fold-up Ramps
- Straight Deck w/ 2 Fold-up Ramps
- Straight Deck w 4' Fold-up Gate
- 2' Dovetail w/ 4' Heavy Duty Fold-up Gate
- Straight Deck w/ Rear Slide-in Ramps

## Color Options

- Black Powdercoat \*
- Equipment Yellow Powdercoat
- Grey Powdercoat
- Red Powdercoat
- Regatta Blue Powdercoat
- Tractor Green Powdercoat
- White Powdercoat

## Other Options

- 10k Jack (Bumper Pull)
- Plate for Winch
- 12" oc Crossmembers
- 2 D-Rings
- 2" Pipetop Removable Siderails
- Steel Floor
- Spare Tire Mount
- Spare Tire and Mount
- 16"oc Crossmembers

\* denotes a standard feature

## Weights

Length	Axles	Est. Base Weight†
18'	2 - 3,500	2360 lbs / 1070 kg
20'	2 - 3,500	2500 lbs / 1134 kg

† Weights are estimated for base trailer only, PJ Trailers makes no guarantee regarding the accuracy of estimated weights

NOW EQUIPPED WITH



**DEXTER AXLES**



# 6" Channel Super-Wide (B6)

# B6



GOOSENECK AVAILABLE

DRIVE-OVER FENDERS



**LED LIGHTS** Lengths 16 - 24'

102" x 22' (B6) Pictured

## Standard Features

- 14,000 lb. G.V.W.R.
- 7,000 lb. x 2 G.A.W.R.
- 2 5/16" Ball Adjustable Coupler
- Safety Chains
- 1 - Drop Leg Jack (10,000 lb.)
- 2 - Dexter E-Z lube Brake Axles (7,000 lb.)
- 6 Leaf Slipper Spring Suspension
- 4 - 16" White Spoke Wheels
- 4 - 235/80R16 Radial Tires (3,520 lb.)
- Electric Breakaway Kit w/ Charger
- 5' Channel Ramps w/ Holder
- Rear Trailer Support Jacks
- 6" Channel Frame & Tongue
- 3" Channel Crossmembers 16" on Center
- 2" Treated Pine Lumber Deck
- 102" Wide Deck
- Sealed Wire Harness w/ 7-Way RV Plug

- Sand Blasted, Acid Washed, Powder Coated
- 4,000 lbs Rated Drive-over fenders
- Rubrail w/Stake Pockets
- Expanded Metal Chain Tray
- DOT Approved Flushmount Lifetime LED Lights

**POWDER COATED**

At PJ Trailers, every trailer we build is powder coated with Sherwin-Williams™ Powder Coat. A powder coat finish is far superior to conventional paint. It is extremely durable and does not easily crack, chip, or peel as conventional paint does. Powdercoating also helps prevent rust & corrosion making it the longest lasting and most durable finish on the market.

## Coupler Options

- BP 2 5/16" Adjustable (14,000 lb.) \*
- BP 2 5/16" Adjustable Rigid Mount (25,000 lb.)
- GN 2 5/16" Round (30,000 lb.) w/ Toolbox
- GN Load-Leveling 2 5/16" Square (30,000 lb.) & Tbx
- 3" Pintle Eye - Channel-mount (20,000 lb.)
- GN 2 5/16" Square (30,000 lb.) w/ Toolbox
- GN 2 5/16" Round (25,000 lb.) w/ Toolbox
- GN 2 5/16" Square (25,000 lb.) w/ Toolbox
- HD 2 5/16" Adjustable Channel Mount 3 Bolt Coupler

## Axle Options

- (2) 5,200# Electric / Spring
- (2) 7,000# Electric / Spring \*
- (2) 7,000# Load Range G 14ply Tires Electric / Spring

## Tail Options

- Straight deck w/ 5' Slide-in Ramps \*
- 2' Dovetail w/ 5' Slide-in Ramps
- 2' Dovetail w/ 5' Fold-up Ramps
- Straight deck w/ 5' Fold-up Ramps
- 2' Dovetail w/ HD Fold-up Ramps
- 4' Dovetail w/ 5' Slide-in Ramps
- 4' Dovetail w/ 5' Fold-up Ramps
- 2' Dovetail w/ 3 5' Fold-up Ramps
- Straight Deck w/ 4' Heavy Duty Fold-up Gate
- 2' Dovetail w/ 4' Heavy Duty Fold-up Gate
- 2' Dovetail w/ Split Heavy Duty Gate
- 2' Dovetail w/ 5' Double Hinge Fold-up Ramps
- 2' Dovetail w/ 5' Rear Slide-in Ramps
- 4' Dovetail w/ 5' Rear Slide-in Ramps
- Straight Deck w/ Rear Slide-in Ramps
- Straight deck w/ HD Fold-up Ramps
- 4' Dovetail w/ Split Heavy Duty Gate
- 4' Dovetail w/ HD Fold-up Ramps
- 4' Dovetail w/ 5' Double Hinge Fold-up Ramps
- Straight deck w/ 3 5' Fold-up Ramps

## Color Options

- Black Powdercoat \*
- Equipment Yellow Powdercoat
- Grey Powdercoat
- Red Powdercoat
- White Powdercoat

## Other Options

- Cold Weather Wiring Harness (7-Way RV)
- 2nd Jack (Bumper Pull)
- Plate for Winch
- 6" Taller GN Riser
- Douglas Fir Lumber
- ¼" Diamond Plate Steel Floor <sup>2</sup>
- 9,990 G.V.W.R.
- 12"oc Crossmembers
- 1 Pair D-Rings
- Rough Oak Floor
- Receiver Hitch
- Goodyear 14 Ply Tire **MUST ADD TO REG 14 PLY COST**
- 2 3/8" Removable Pipetop on Siderails
- 1 1/2 ga Diamond Plate Steel Floor & 4 D-Rings
- Front Toolbox (Bumper Pull)
- Mount Only for Spare Tire
- Spare Tire and Mount (Bumper Pull)
- Deck on the Neck (GN Only)
- Rear Trailer Support Jacks
- Winch 12VDC (12,000 lb.) Incl. Front Toolbox
- 2-speed Jack (12,000 lb.)

\* denotes a standard feature

## Weights

Length	Axles	Est. Base Weight <sub>t</sub>
22'	2 - 7,000	3750 lbs / 1701 kg

† Weights are estimated for base trailer only, PJ Trailers makes no guarantee regarding the accuracy of estimated weights

NOW EQUIPPED WITH



**DEXTER AXLES**



# 8" Channel Super-Wide (B8)

# B8



**LED LIGHTS** Lengths  
20 - 44'

102" x 30' (B8) with Optional Spare Tire & Mount Pictured

## Standard Features

- 14,000 lb. G.V.W.R.
- 7,000 lb. x 2 G.A.W.R.
- 2 5/16" Ball A-Frame Coupler
- Safety Chains
- 1 - Drop Leg Jack (10,000 lb.)
- 2 - Dexter E-Z lube Brake Axles (7,000 lb.)
- 6 Leaf Slipper Spring Suspension
- 4 - 16" White Spoke Wheels
- 4 - 235/80R16 Radial Tires (3,520 lb.)
- Stake Pockets
- Electric Breakaway Kit w/ Charger
- 5' Channel Ramps w/ Holder
- Rear Trailer Support Stands
- Front Toolbox (GN Only)
- 8" Channel Frame & Tongue
- 3" Channel Crossmembers 16" on Center
- 102" Wide Rail to Rail

- 2" Treated Pine Lumber Deck
- DOT Approved Flushmount Lifetime LED Lights
- Sealed Wire Harness w/ 7-Way RV Plug
- Sand Blasted, Acid Washed, Powder Coated
- Expanded Metal Chain Tray (Bumper Pull)

**POWDER COATED**

At PJ Trailers, every trailer we build is powder coated with Sherwin-Williams™ Powder Coat. A powder coat finish is far superior to conventional paint. It is extremely durable and does not easily crack, chip, or peel as conventional paint does. Powdercoating also helps prevent rust & corrosion making it the longest lasting and most durable finish on the market.

## Coupler Options

- BP 2 5/16" Adjustable (14,000 lb.) \*
- BP 2 5/16" Adjustable Rigid Mount (25,000 lb.)
- GN 2 5/16" Round (30,000 lb.) w/ Toolbox
- GN Load-Leveling 2 5/16" Square (30,000 lb.) & Tbx
- 3" Pintle Eye - Channel-mount (20,000 lb.)
- GN 2 5/16" Square (30,000 lb.) w/ Toolbox
- GN 2 5/16" Round (25,000 lb.) w/ Toolbox
- GN 2 5/16" Square (25,000 lb.) w/ Toolbox
- HD 2 5/16" Adjustable Channel Mount 3 Bolt Coupler

## Axle Options

- (2) 7,000# Electric / Spring \*
- (2) 7,000# Elec/Hyd Drum (1,000 PSI Pump) / Spring
- (2) 7,000# Elec/Hyd Disk (1,600 PSI Pump) / Spring
- (3) 7,000# Electric / Spring
- (3) 7,000# Elec/Hyd Disk (1,600 PSI Pump) / Spring
- (2) 7,000# Load Range G 14ply Tires Electric / Spring
- (2) 7,000# LR G 14ply Tires Elec/Hyd Drum (1,000 PSI)/Spring
- (2) 7,000# LR G 14ply Tires Elec/Hyd Disk (1,600 PSI)/Spring
- (3) 7,000# LR G 14ply Tires Electric / Spring
- (3) 7,000# LR G 14ply Tires Elec/Hyd Disk (1,600 PSI)/Spring

## Tail Options

- Straight deck w/ 5' Slide-in Ramps \*
- 2' Dovetail w/ 5' Slide-in Ramps
- 2' Dovetail w/ 5' Fold-up Ramps
- Straight deck w/ 5' Fold-up Ramps
- 2' Dovetail w/ HD Fold-up Ramps
- 4' Dovetail w/ 5' Slide-in Ramps
- 4' Dovetail w/ 5' Fold-up Ramps
- 2' Dovetail w/ 3 5' Fold-up Ramps
- Straight Deck w/ 4' Heavy Duty Fold-up Gate
- 2' Dovetail w/ 4' Heavy Duty Fold-up Gate
- 2' Dovetail w/ Split Heavy Duty Gate
- 2' Dovetail w/ 5' Dbl Hinge Fold-up Ramps
- 2' Dovetail w/ 5' Rear Slide-in Ramps
- 4' Dovetail w/ 5' Rear Slide-in Ramps
- Straight Deck w/ Rear Slide-in Ramps
- Straight deck w/ HD Fold-up Ramps
- 4' Dovetail w/ Split Heavy Duty Gate
- 4' Dovetail w/ HD Fold-up Ramps
- 4' Dovetail w/ 5' Dbl Hinge Fold-up Ramps
- Straight deck w/ 3 5' Fold-up Ramps

## Weights

Length	Axles	Est. Base Weight†
24'	2 - 7,000	4680 lbs / 2123 kg
24' GN	2 - 7,000	5280 lbs / 2395 kg

† Weights are estimated for base trailer only, PJ Trailers makes no guarantee regarding the accuracy of estimated weights

NOW EQUIPPED WITH



## Triple Axle Hot-Shot Trailer

## Other Options

- Cold Weather Wiring Harness (7-way RV)
- 2nd Jack (Bumper Pull)
- Plate for Winch
- 6" Taller GN Riser
- Douglas Fir Lumber
- 1/4" Diamond Plate Steel Floor <sup>2</sup>
- 9,990 G.V.W.R.
- 12"oc Crossmembers
- 1 Pair D-Rings
- Rough Oak Floor
- Hydraulic Jacks (12,000 lb.) Incl. Small Toolbox <sup>2</sup>
- Receiver Hitch
- Goodyear 14 Ply Tire (add to 14ply axle option)
- 2 3/8" Removable Pipetop on Siderails
- 1 ga Diamond Plate Steel Floor & 4 D-Rings
- Front Toolbox (Bumper Pull)
- Mount Only for Spare Tire
- Spare Tire and Mount (Bumper Pull)
- Deck on the Neck (GN Only)
- Rear Trailer Support Jacks
- Winch 12VDC (12,000 lb.) Incl. Front Toolbox
- 2-speed Jacks (12,000 lb.)

\* denotes a standard feature



# Angle Pipetop (P7)

# P7



**LED LIGHTS** Lengths  
16' - 20'

## Standard Features

- 9,990 lb. G.V.W.R.
- 5,200 lb. x 2 G.A.W.R.
- 2 5/16" Ball Coupler
- Safety Chains
- 1 - Jack (7,000 lb.)
- 2 - Dexter E-Z lube Brake Axles (5,200 lb.)
- 6 Leaf Slipper Spring Suspension
- 4 - 15" White Spoke Wheels
- 4 - 225/75R15 Radial Tires
- Electric Breakaway Kit w/ Charger
- 5' Channel Ramps w/ Holder
- 2x3 Angle Upright
- 2 7/8 Pipe Top Rail
- 5" Channel Tongue & 3" x 5" Angle Frame
- 2x3 Angle 24" on Center
- 2" Treated Pine Lumber Deck
- Sealed Wire Harness
- Sand Blasted, Acid Washed, Powder Coated
- DOT Approved Flushmount Lifetime LED Lights



At PJ Trailers, every trailer we build is powder coated with Sherwin-Williams™ Powder Coat. A powder coat finish is far superior to conventional paint. It is extremely durable and does not easily crack, chip, or peel as conventional paint does. Powdercoating also helps prevent rust & corrosion making it the longest lasting and most durable finish on the market.

## Coupler Options

- BP 2 5/16" A-Frame \*
- BP 2 5/16" Adjustable

## Axle Options

- (2) 5,200# Electric / Spring \*
- (2) 5,200# One Electric / Spring

## Tail Options

- Straight deck w/ 5' Slide-in Ramps \*
- Straight deck w/ 5' Fold-up Ramps

## Color Options

- Black Powdercoat \*
- Equipment Yellow Powdercoat
- Grey Powdercoat
- Red Powdercoat
- White Powdercoat

## Other Options

- Upgrade to 3" X 3" Square Tubing Top Rail
- 2x3 Angle 16" on Center Upgrade
- 1 Pair D-Rings
- Receiver Hitch
- Spare Tire Mount
- Spare Tire and Mount

\* denotes a standard feature



AIR RIDE SUSPENSION AVAILABLE

## Weights

Length	Axles	Est. Base Weight†
16'	2 - 5,200	2420 lbs / 1098 kg
18'	2 - 5,200	2590 lbs / 1175 kg
20'	2 - 5,200	2760 lbs / 1252 kg

NOW EQUIPPED WITH



† Weights are estimated for base trailer only, PJ Trailers makes no guarantee regarding the accuracy of estimated weights



# Angle Pipetop (P8)

# P8



**Lengths**  
16' - 20'

## Standard Features

- 14,000 lb. G.V.W.R.
- 7,000 lb. x 2 G.A.W.R.
- 2 5/16" Ball Coupler
- Safety Chains
- 1 - Jack (7,000 lb.)
- 2 - Dexter E-Z lube Brake Axles (7,000 lb.)
- 6 Leaf Slipper Spring Suspension
- 4 - 16" White Spoke Wheels
- 4 - 235/80R16 Radial Tires (3,520 lb.)
- Electric Breakaway Kit w/ Charger
- 5' Channel Ramps w/ Holder
- 2x3 Angle Upright
- 2 7/8 Pipe Top Rail
- 5" Channel Tongue & 3" x 5" Angle Frame
- 3" Channel Crossmembers 16" on Center
- 2" Treated Pine Lumber Deck
- Sealed Wire Harness
- Sand Blasted, Acid Washed, Powder Coated
- DOT Approved Flushmount Lifetime LED Lights



At PJ Trailers, every trailer we build is powder coated with Sherwin-Williams™ Powder Coat. A powder coat finish is far superior to conventional paint. It is extremely durable and does not easily crack, chip, or peel as conventional paint does. Powdercoating also helps prevent rust & corrosion making it the longest lasting and most durable finish on the market.

## Coupler Options

- BP 2 5/16" Adjustable (14,000 lb.) \*
- Rigid mount 2-5/16 (25,000 lb.)
- GN 2 5/16" Round (30,000 lb.) w/ Toolbox
- GN Load-Leveling 2 5/16" Square (30,000 lb.) & Tbx
- 3" Pintle Eye - Channel-mount (21,000 lb.)
- GN 2 5/16" Square (30,000 lb.) w/ Toolbox
- GN 2 5/16" Round (25,000 lb.) w/ Toolbox
- GN 2 5/16" Square (25,000 lb.) w/ Toolbox

## Axle Options

- (2) 5,200# Electric / Spring
- (2) 5,200# One Electric / Spring
- (2) 7,000# Electric / Drop
- (2) 7,000# Electric / Spring \*
- (2) 7,000# Electric / Torsion
- (2) 7,000# One Electric / Spring
- (2) 7,000# Elec/Hyd Disk / Spring
- (2) 7,000# Oil Bath/Drum Brake / Spring
- (2) 7,000# Dexter Electric / Spring
- (2) 7,000# Dexter Electric / Torsion
- (2) 7,000# Load Range G 14ply Tires Electric / Spring
- (2) 7,000# Load Range G 14ply Tires Electric / Torsion
- (2) 7,000# Load Range G 14ply Tires Hydraulic Drum / Spring
- (2) 7,000# Load Range G 14ply Tires Elec/Hyd Disk / Spring
- (2) 8,000# Oil Bath Axles w / 235-80 Tires Electric / Spring
- (2) 8,000# Load Range G Tires Electric / Spring
- (2) 8,000# Load Range G Tires Electric / Torsion

## Tail Options

- Straight deck w/ 5' Slide-in Ramps \*

## Color Options

- Black Powdercoat \*
- Equipment Yellow Powdercoat
- Grey Powdercoat
- Red Powdercoat
- White Powdercoat

## Other Options

- 1 Pair D-Rings
- Spare Tire Mount
- Spare Tire and Mount

\* denotes a standard feature



AIR RIDE SUSPENSION AVAILABLE

## Weights

Length	Axles	Est. Base Weight;
16'	2 - 7,000	2620 lbs / 1188 kg
18'	2 - 7,000	2830 lbs / 1284 kg
20'	2 - 7,000	3050 lbs / 1383 kg
22'	2 - 7,000	3270 lbs / 1483 kg
24'	2 - 7,000	3480 lbs / 1579 kg

NOW EQUIPPED WITH



†Weights are estimated for base trailer only, PJ Trailers makes no guarantee regarding the accuracy of estimated weights



# 4" Channel Carhauler (C4)

# C4



**Lengths**  
14' - 18'

83" x 18' (C4) Pictured

## Standard Features

- 7,000 G.V.W.R.
- 7,000 G.A.W.R.
- 2" Ball Coupler
- Safety Chains
- 1 - Pipe Mount Swivel Jack (2,000 lb.)
- 2 - Dexter E-Z lube Idler Axle (3,500 lb.)
- 4 Leaf Double-eye Spring Suspension
- 4 - NEW 15" White Spoke Wheels
- 4 - NEW ST205/75R15 Radials (1,820 lb.)
- Stake Pockets
- 9" x 72" Treadplate Removable Alum. Fenders
- 4" Channel Frame & Tongue
- 2 1/2" x 2 1/2" x 3/16" Angle Crossmembers
- 2" Treated Pine Lumber Deck
- 83" Wide Deck
- DOT Approved Flushmount Lights
- Sealed Wire Harness
- Sand Blasted, Acid Washed, Powder Coated

**POWDER COATED**

At PJ Trailers, every trailer we build is powder coated with Sherwin-Williams™ Powder Coat. A powder coat finish is far superior to conventional paint. It is extremely durable and does not easily crack, chip, or peel as conventional paint does. Powdercoating also helps prevent rust & corrosion making it the longest lasting and most durable finish on the market.

## Coupler Options

- BP 2" A-Frame \*
- BP 2 5/16" A-Frame
- BP 2" Adjustable
- BP 2 5/16" Adjustable
- 3" Pintle Eye - Channel-mount

## Axle Options

- (2) 3,500# One Electric / Spring \*
- (2) 3,500# Idler / Spring
- (2) 3,500# Electric / Spring

## Tail Options

- Straight Deck w/ 5' Slide-in Ramps \*
- Straight Deck w 4' Fold-up Gate
- Straight Deck w/ 4' Heavy Duty Fold-up Gate
- 2' Dovetail w/ 4' Heavy Duty Fold-up Gate
- 2' Dovetail w/ 5' Slide-in Ramps

## Color Options

- Black Powdercoat \*
- Equipment Yellow Powdercoat
- Grey Powdercoat
- Red Powdercoat
- Regatta Blue Powdercoat
- Tractor Green Powdercoat
- White Powdercoat

## Other Options

- Plate for Winch
- Upgrade to 7k Jack
- 2 D-Rings
- Diamond Plate Steel Fenders
- LED Lights Upgrade
- Rubrail
- Spare Tire Mount
- Rear Trailer Support Jacks
- Spare Tire and Mount
- 16" oc Crossmembers

\* denotes a standard feature

## Weights

Length	Axles	Est. Base Weight;
14'	2 - 3,500	1640 lbs / 744 kg
16'	2 - 3,500	1720 lbs / 780 kg
18'	2 - 3,500	1800 lbs / 816 kg

NOW EQUIPPED WITH



†Weights are estimated for base trailer only, PJ Trailers makes no guarantee regarding the accuracy of estimated weights



# 5" Channel Carhauler (C5)



**LED LIGHTS** Lengths  
14' - 20'

83" x 20' (C5) Pictured

## Standard Features

- 7,000 lb. G.V.W.R.
- 3,500 lb. x 2 G.A.W.R.
- 2" Ball Coupler
- Safety Chains
- 1 - Pipe Mount Swivel Jack (5,000 lb.)
- 2 - Dexter E-Z lube Axles, Idler & Brake (3,500 lb.)
- 4 Leaf Double-eye Spring Suspension
- 4 - NEW 15" White Spoke Wheels
- 4 - NEW ST205/75R15 Rad. Tires (1,820 lb.)
- Stake Pockets
- Electric Breakaway Kit w/ Charger
- 9" x 72" Treadplate Removable Alum. Fenders
- 5' Channel Ramps w/ Holder
- 5" Channel Frame & Tongue
- 3" Channel Crossmembers 24" on Center

- 2" Treated Pine Lumber Deck
- 83" Wide Deck
- DOT Approved Flushmount Lights
- Sealed Wire Harness
- Sand Blasted, Acid Washed, Powder Coated

### POWDER COATED

At PJ Trailers, every trailer we build is powder coated with Sherwin-Williams™ Powder Coat. A powder coat finish is far superior to conventional paint. It is extremely durable and does not easily crack, chip, or peel as conventional paint does. Powdercoating also helps prevent rust & corrosion making it the longest lasting and most durable finish on the market.

## Coupler Options

- BP 2" A-Frame \*
- BP 2 5/16" A-Frame
- BP 2" Adjustable
- BP 2 5/16" Adjustable
- 3" Pintle Eye - Channel-mount (14,000 lb.)

## Axle Options

- (2) 3,500# One Electric / Spring \*
- (2) 3,500# One Electric / Torsion
- (2) 3,500# Electric / Spring
- (2) 3,500# Electric / Torsion
- (2) 3,500# Hyd. Drum w/ Surge Coupler / Spring
- (2) 5,200# One Electric / Spring
- (2) 5,200# One Electric / Torsion
- (2) 5,200# Electric / Spring
- (2) 5,200# Electric / Torsion
- (2) 5,200# Hyd. Drum w/ Surge Coupler / Spring

## Tail Options

- Straight Deck w/ 5' Slide-in Ramps \*
- Straight Deck w 4' Fold-up Gate
- Straight Deck w/ 2 Fold-up Ramps
- Straight Deck w/ 4' Heavy Duty Fold-up Gate
- Straight Deck w/ 4' Split Heavy Duty Gate
- Straight Deck w/ Rear Slide-in Ramps
- 2' Dovetail w/ 2 Fold-up Ramps
- 2' Dovetail w/ 3 Fold-up Ramps
- 2' Dovetail w/ 4' Heavy Duty Fold-up Gate
- 2' Dovetail w/ 5' Rear Slide-in Ramps
- 2' Dovetail w/ 5' Slide-in Ramps
- 2' Dovetail w/ Split Heavy Duty Gate
- 4' Dovetail w/ 2 Fold-up Ramps
- 4' Dovetail w/ 5' Rear Slide-in Ramps
- 4' Dovetail w/ 5' Slide-in Ramps
- 4' Dovetail w/ Split Heavy Duty Gate

## Color Options

- Black Powdercoat \*
- Equipment Yellow Powdercoat
- Grey Powdercoat
- Red Powdercoat
- Regatta Blue Powdercoat
- Tractor Green Powdercoat
- White Powdercoat

\* denotes a standard feature

## Weights

Length	Axles	Est. Base Weight;
14'	2 - 3,500	1740 lbs / 789 kg
16'	2 - 3,500	1850 lbs / 839 kg
18'	2 - 3,500	1970 lbs / 894 kg
20'	2 - 3,500	2080 lbs / 943 kg

†Weights are estimated for base trailer only, PJ Trailers makes no guarantee regarding the accuracy of estimated weights

## Other Options

- Cold Weather Wiring Harness (Paris Only)
- Upgrade to 225/75 R15 on 3.5k Axles (5.2k Fenders)
- 10k Jack (Bumper Pull)
- Plate for Winch
- Upgrade to 235/80 R16 on 52k Axles
- Upgrade to 7k Jack
- 4ft Expanded Metal Sides
- Side Mount ATV Ramps (12ft or Longer)
- 4ft Solid Metal Sides
- 2 D-Rings
- Diamond Plate Fenders
- 4ft Side Gate (14ft or longer)
- Landscape Toolbox ( must have 2ft or 4ft Sides)
- Open Pit Steel Floor
- 2" Pipetop Removable Siderails
- Rubrail
- U8 Side Rail
- 1 1/2" Diamond Plate Steel Floor w/ 4 D-Rings
- Spare Tire Mount
- Rear Trailer Support Jacks
- Spare Tire and Mount
- 16"oc Crossmembers
- 22" Solid Metal Sides w/ 2" pipe-top







# 6" Channel Custom Carhauler (CC)



**Lengths**  
16' - 24'

## Standard Features

- 14,000 lb. G.V.W.R.
- 7,000 lb. x 2 G.A.W.R.
- 2 5/16" Ball Adjustable Coupler
- Safety Chains
- 1 - Drop Leg Jack (10,000 lb.)
- 2 - Dexter E-Z lube Brake Axles (7,000 lb.)
- 6 Leaf Slipper Spring Suspension
- 4 - 16" White Spoke Wheels
- 4 - 235/80R16 Radial Tires (3,520 lb.)
- Stake Pockets
- Electric Breakaway Kit w/ Charger
- 9" x 72" Treadplate Removable Steel Fenders
- 5' Channel Ramps w/ Holder
- Rear Trailer Support Jacks
- Front Toolbox (GN Only)
- 6" Channel Frame & Tongue
- 3" Channel Crossmembers 16" on Center
- 2" Treated Pine Lumber Deck
- 83" Wide Deck (80" w/ Torsion or Drop Axles)
- DOT Approved Flushmount Lifetime LED Lights
- Sealed Wire Harness w/ 7-Way RV Plug
- Sand Blasted, Acid Washed, Powder Coated



At PJ Trailers, every trailer we build is powder coated with Sherwin-Williams™ Powder Coat. A powder coat finish is far superior to conventional paint. It is extremely durable and does not easily crack, chip, or peel as conventional paint does. Powdercoating also helps prevent rust & corrosion making it the longest lasting and most durable finish on the market.

## Weights

Length	Axles	Est. Base Weight†
16'	2 - 7,000	2800 lbs / 1270 kg
18'	2 - 7,000	2950 lbs / 1338 kg
20'	2 - 7,000	3100 lbs / 1406 kg
22'	2 - 7,000	3250 lbs / 1474 kg
24'	2 - 7,000	3400 lbs / 1542 kg

† Weights are estimated for base trailer only, PJ Trailers makes no guarantee regarding the accuracy of estimated weights



AIR RIDE SUSPENSION AVAILABLE

NOW EQUIPPED WITH



## Other Options

- Cold Weather Wiring Harness (7-Way RV)
- 2nd Jack (Bumper Pull)
- Plate for Winch
- 6" Taller GN Riser
- Douglas Fir Lumber
- 9,990 G.V.W.R.
- Rubrail
- 12" oc Crossmembers
- 1 Pair D-Rings
- Rough Oak Floor
- Drive Over Fenders
- Receiver Hitch
- 2 3/8" Removable Pipetop on Siderails
- Diamond Plate Running Boards
- Steel Floor & 4 D-Rings
- Front Toolbox (Bumper Pull)
- 102" Deck Width
- Mount Only for Spare Tire
- Spare Tire and Mount (Bumper Pull)
- Deck on the Neck (GN Only)
- Rear Trailer Support Jacks
- Winch 12VDC (12,000 lb.) Incl. Front Toolbox
- 2-speed Jacks (12,000 lb.)
- HD Trailer 2x Jacks (25k lb.) No Frt T/box GN Only

## Coupler Options

- BP 2 5/16" Adjustable (14,000 lb.) \*
- Rigid mount 2-5/16 (25,000 lb.)
- GN 2 5/16" Round (30,000 lb.) w/ Toolbox
- GN Load-Leveling 2 5/16" Square (30,000 lb.) & Tbx
- 3" Pintle Eye - Channel-mount (20,000 lb.)
- GN 2 5/16" Square (30,000 lb.) w/ Toolbox
- GN 2 5/16" Round (25,000 lb.) w/ Toolbox
- GN 2 5/16" Square (25,000 lb.) w/ Toolbox
- HD 2 5/16" Adjustable Channel Mount 3 Bolt Coupler

## Axle Options

- (2) 5,200# Electric / Spring
- (2) 5,200# Electric / Torsion
- (2) 5,200# Hydraulic Drum / Spring
- (2) 7,000# Electric / Drop
- (2) 7,000# Electric / Spring \*
- (2) 7,000# Electric / Torsion
- (2) 7,000# Hydraulic Drum / Spring
- (2) 7,000# Elec/Hyd Disk / Spring
- (2) 7,000# Oil Bath/Drum Brake / Spring
- (3) 7,000# Electric / Spring
- (3) 7,000# Electric / Torsion
- (3) 7,000# Elec/Hyd Disk / Spring
- (2) 8,000# Oil Bath Axles w / 235-80 Tires Electric / Spring
- (2) 8,000# Load Range G Tires Electric / Spring
- (2) 8,000# Load Range G Tires Electric / Torsion
- (3) 8,000# Load Range G Tires Electric / Spring

## Tail Options

- Straight deck w/ 5' Slide-in Ramps \*
- Straight Deck w/ 4' Heavy Duty Fold-up Gate
- Straight deck w/ 5' Fold-up Ramps
- Straight deck w/ HD Fold-up Ramps
- Straight Deck w/ Rear Slide-in Ramps
- 2' Dovetail w/ 3 5' Fold-up Ramps
- 2' Dovetail w/ 5' Double Hinge Fold-up Ramps
- 2' Dovetail w/ 5' Fold-up Ramps
- 2' Dovetail w/ 5' Slide-in Ramps
- 2' Dovetail w/ 5' with Rear Slide-in Ramps
- 2' Dovetail w/ HD Fold-up Ramps
- 2' Dovetail w/ Split Heavy Duty Gate
- 2" Dovetail w/ 4' Heavy Duty Fold-up Gate
- 4' Dovetail w/ 5' Double Hinge Fold-up Ramps
- 4' Dovetail w/ 5' Fold-up Ramps
- 4' Dovetail w/ 5' Slide-in Ramps
- 4' Dovetail w/ 5' with Rear Slide-in Ramps
- 4' Dovetail w/ HD Fold-up Ramps

## Color Options

- Black Powdercoat \*
- Equipment Yellow Powdercoat
- Grey Powdercoat
- Red Powdercoat
- White Powdercoat

\* denotes a standard feature



# 8" Channel Carhauler (C8)

# C8



**Lengths**  
20' - 40'

## Standard Features

- 14,000 lb. G.V.W.R.
- 7,000 lb. x 2 G.A.W.R.
- 2 5/16" Ball A-Frame Coupler
- Safety Chains
- 1 - Drop Leg Jack (10,000 lb.)
- 2 - Dexter E-Z lube Brake Axles (7,000 lb.)
- 6 Leaf Slipper Spring Suspension
- 4 - 16" White Spoke Wheels
- 4 - 235/80R16 Radial Tires (3,520 lb.)
- Stake Pockets
- Electric Breakaway Kit w/ Charger
- 9" x 72" Treadplate Removable Steel Fenders
- 5' Channel Ramps w/ Holder
- Rear Trailer Support Stands
- Front Toolbox (GN Only)
- 2" Treated Pine Lumber Deck
- 83" Wide Deck (80" w/ Torsion Axles)
- DOT Approved Flushmount Lifetime LED Lights
- Sealed Wire Harness
- Sand Blasted, Acid Washed, Powder Coated



At PJ Trailers, every trailer we build is powder coated with Sherwin-Williams™ Powder Coat. A powder coat finish is far superior to conventional paint. It is extremely durable and does not easily crack, chip, or peel as conventional paint does. Powdercoating also helps prevent rust & corrosion making it the longest lasting and most durable finish on the market.

## Coupler Options

- BP 2 5/16" Adjustable (14,000 lb.) \*
- Rigid mount 2-5/16 (25,000 lb.)
- GN 2 5/16" Round (30,000 lb.)
- GN Load-Leveling 2 5/16" Square (30,000 lb.)
- 3" Pintle Eye - Channel-mount (21,000 lb.)
- GN 2 5/16" Square (30,000 lb.)
- GN 2 5/16" Round (25,000 lb.)
- GN 2 5/16" Square (25,000 lb.)

## Axle Options

- (2) 7,000# Elec / Drop
  - (2) 7,000# Elec / Spring \*
  - (2) 7,000# Elec / Torsion\*\*
  - (2) 7,000# Elec/Hyd Disk / Spring
  - (3) 7,000# Elec / Spring
  - (3) 7,000# Elec / Torsion\*\*
  - (3) 7,000# Elec/Hyd Disk / Spring
  - (2) 7,000# 14Ply Tires Elec / Spring
  - (2) 7,000# 14Ply Tires Elec / Torsion\*\*
  - (2) 7,000# 14Ply Tires Elec/Hyd Disk / Spring
  - (3) 7,000# 14Ply Tires Elec / Spring
  - (3) 7,000# 14Ply Tires Elec / Torsion\*\*
  - (3) 7,000# 14Ply Tires Elec/Hyd Disk / Spring
  - (2) 8,000# 14Ply Tires Elec / Spring\*\*
  - (3) 8,000# 14Ply Tires Elec / Spring\*\*
- \*\* (note only 80" between fenders on CH)

## Tail Options

- Straight deck w/ 5' Slide-in Ramps \*
- 2' Dovetail w/ 5' Slide-in Ramps
- 2' Dovetail w/ 5' Fold-up Ramps
- Straight deck w/ 5' Fold-up Ramp

## Color Options

- Black Powdercoat \*
- Equipment Yellow Powdercoat
- Grey Powdercoat
- Red Powdercoat
- White Powdercoat

## Other Options

- 2nd Jack (Bumper Pull)
- Plate for Winch
- 6" Taller GN Riser
- 9,990 G.V.W.R.
- Rubrail
- 12" oc Crossmembers
- 1 Pair D-Rings
- Oak Floor
- Drive Over Fenders
- Hydraulic Jacks (12,000 lb.)
- Receiver Hitch
- LED Light Package
- 2 3/8" Removable Pipetop on Siderails
- Diamond Plate Running Boards
- Steel Floor & 4 D-Rings
- 102" Deck Width
- Mount Only for Spare Tire
- Spare Tire and Mount (Bumper Pull)
- Deck on the Neck (GN Only)
- Winch 12VDC (12,000 lb.)
- 2-speed Jacks (12,000 lb.)
- 2-speed Jacks, (12,000 lb.) No Front Toolbox

## Weights

Length	Axles	Est. Base Weight;
20'	2 - 7,000	3340 lbs / 1515 kg
22'	2 - 7,000	3530 lbs / 1601 kg
24'	2 - 7,000	3720 lbs / 1687 kg
26'	2 - 7,000	3910 lbs / 1774 kg
28'	2 - 7,000	4100 lbs / 1860 kg
30'	2 - 7,000	4300 lbs / 1950 kg
32'	2 - 7,000	4490 lbs / 2037 kg
34'	2 - 7,000	4680 lbs / 2123 kg

† Weights are estimated for base trailer only, PJ Trailers makes no guarantee regarding the accuracy of estimated weights



AIR RIDE SUSPENSION AVAILABLE

NOW EQUIPPED WITH



\* denotes a standard feature



# Light Duty Deckover 5" Channel (L5)

# L5



**Lengths**  
16' - 20'



### Coupler Options

- BP 2 5/16" Adjustable (14,000 lb.) \*
- 3" Pintle Eye - Channel-mount (21,000 lb)

### Axle Options

- (2) 3,500# Electric / Spring \*

### Tail Options

- Straight Deck w/ 6'6" Slide-in Ramps \*

### Other Options

- 1 Pair D-Rings
- Spare Tire and Mount (Bumper Pull)
- V Shape Front Deck

\* denotes a standard feature

### Weights

Length	Axles	Est. Base Weight <sub>t</sub>
16'	2 - 3,500	2500 lbs / 1134 kg
18'	2 - 3,500	2660 lbs / 1207 kg
20'	2 - 3,500	2800 lbs / 1270 kg

†Weights are estimated for base trailer only, PJ Trailers makes no guarantee regarding the accuracy of estimated weights

### Standard Features

- 7,000 lb. G.V.W.R.
- 3,500 lb. x 2 G.A.W.R.
- 2 5/16" Adjustable Ball Coupler
- Safety Chains
- 1 - Drop Leg Jack (7,000 lb.)
- 2 - Dexter E-Z lube Brake Axles (3,500 lb.)
- 6 Leaf Slipper Spring Suspension
- 4 - 15" White Spoke Wheels
- 4 - 205/75R15 Radial Tires (1,800 lb.)
- Rubrail & Stake Pockets
- Electric Breakaway Kit w/ Charger
- DOT Reflective Tape
- 6' Slide in Ramps w/ Holders
- 5" Channel Tongue
- 5" Channel Frame Main Frame
- 3x2" Angle Channel Crossmembers 16" on Center • 2" Treated Pine Lumber Deck
- 101" Wide Deck
- DOT Approved Flushmount Lifetime LED Lights
- Sealed Wire Harness
- Sand Blasted, Acid Washed, Powder Coated



# Medium Duty Deckover 6" Channel (L6)

# L6



**Lengths**  
16' - 20'



### Coupler Options

- BP 2 5/16" Adjustable (14,000 lb.) \*
- 3" Pintle Eye - Channel-mount (21,000 lb)

### Axle Options

- (2) 5,200# Electric / Spring \*

### Tail Options

- Straight Deck w/ 6'6" Slide-in Ramps \*

### Other Options

- 1 Pair D-Rings
- Spare Tire and Mount (Bumper Pull)
- V Shape Front Deck

\* denotes a standard feature

### Weights

Length	Axles	Est. Base Weight <sub>t</sub>
16'	2 - 5,200	2820 lbs / 1279 kg
18'	2 - 5,200	2980 lbs / 1352 kg
20'	2 - 5,200	3020 lbs / 1370 kg

†Weights are estimated for base trailer only, PJ Trailers makes no guarantee regarding the accuracy of estimated weights

### Standard Features

- 9,990 lb. G.V.W.R.
- 5,200 lb. x 2 G.A.W.R.
- 2 5/16" Adjustable Ball Coupler
- Safety Chains
- 1 - Drop Leg Jack (7,000 lb.)
- 2 - Dexter E-Z lube Brake Axles (5,200 lb.)
- 6 Leaf Slipper Spring Suspension
- 4 - 15" White Spoke Wheels
- 4 - 225/75R15 Radial Tires
- Rubrail & Stake Pockets
- Electric Breakaway Kit w/ Charger
- DOT Reflective Tape
- 6' Slide in Ramps w/ Holders
- 6" Channel Tongue
- 6" Channel Frame Main Frame
- 3x2" Angle Channel Crossmembers 16" on Center
- 2" Treated Pine Lumber Deck
- 101" Wide Deck
- DOT Approved Flushmount Lifetime LED Lights
- Sealed Wire Harness
- Sand Blasted, Acid Washed, Powder Coated



# Car haulers & Equipment Options Guide

(some options not shown, please view the product page for a list of all options)

## Coupler Options



Bumper Pull



3" Pintle Eye

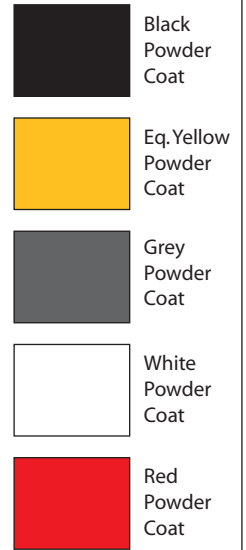


8" I-Beam Gooseneck (CC)



12" I-Beam Gooseneck (C8)  
24+ ft only

## Color Options



(actual color may vary)

## Tail Options



Straight deck w/ 5' Slide-in Ramps



2' Dovetail w/ 5' Slide-in Ramps



Straight deck w/ 5' Fold-up Ramps



2' Dovetail w/ 5' Fold-up Ramps

## Other Options



Receiver Hitch



Rubrail



Winch 12VDC (12,000 lb.)



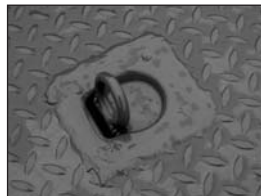
Deck on the Neck (GN Only)



1 Pair D-Rings



Rough Oak Floor



Steel Floor & 4 D-Rings



Spare Tire Mount



Diamond Plate Running Boards



2 3/8" Pipetop Removable Siderails (CC, C8)



**TRAILER FLEX** TrailerFlex Air Ride Suspension



2' Dovetail w/ HD Fold-up Ramps



## PJ TRAILERS

- #1 Professional Grade Open Trailer Manufacturer
- Broad Line of Dumps, Flatdecks, Utilities, Tilts & Equipment Trailers
- Over 300 Independent PJ Trailers Dealer Locations in the US & Canada

Visit Us Online at [www.pjtrailers.com](http://www.pjtrailers.com)